



FOR MORE INFORMATION CONTACT US:

CHOBE SAFARI LODGE
 P. O. BOX 10, KASANE, BOTSWANA
 TEL: (+267) 625 0336
 FAX: (+267) 625 0437
 EMAIL: RESERVATIONS@CHOBELODGE.CO.BW
 WEB: WWW.CHOBELODGE.CO.BW

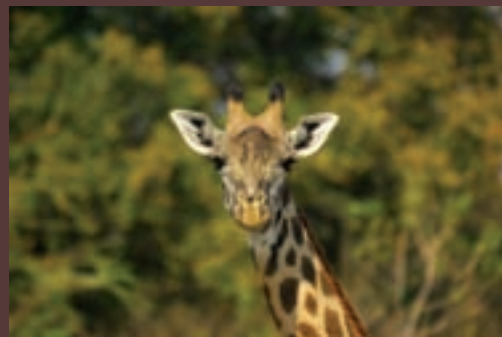
NATA LODGE
 PO BOX 10, NATA, BOTSWANA
 TEL: (+267) 621 1210 / 621 1260
 FAX: (+267) 621 1265
 EMAIL: NATALODGE@INET.CO.BW
 WEB: WWW.NATALODGE.COM

POM POM CAMP
 TEL: (+267) 625 0336 / 625 0385
 FAX: (+267) 625 0437
 EMAIL: POMPOM@CHOBELODGE.CO.BW
 WEB: WWW.POMPOMCAMP.COM

GUNN'S CAMP
 TEL: (+267) 686 0023
 FAX: (+267) 686 0040
 EMAIL: SALES@GUNNSCAMP.NET
 WEB: WWW.GUNNSCAMP.NET

GPS CO-ORDINATES:
 CHOBE SAFARI LODGE S 17 48.335, E 25 08.856
 NATA LODGE S 12 13.448, E 26 16.052

IN ASSOCIATION WITH NATA LODGE, POMPOM CAMP & GUNN'S CAMP



Under One Botswana Sky



Your African Experience

 *Chobe Safari Lodge*



NEW MAIN LODGE

CHOBE IS ONE OF THE MOST PROLIFIC WILDLIFE AREAS IN AFRICA AND OFFERS EXTENSIVE GAME VIEWING FROM WATER AND LAND





THE RIVER ROOMS ARE FURNISHED WITH EVERY LUXURY, INCLUDING AIR-CONDITIONING, SATELLITE TV & TELEPHONE AND THEY LOOK ON TO THE CHOBE RIVER

Our accommodation



THE THATCHED RONDAVELS ARE INDEPENDENTLY POSITIONED, WITH CEILING FANS & EN-SUITE BATHROOMS

THE FAMOUS CHOBE CAMPSITE HAS A FIRST-RATE ABLUTION AREA & FACILITIES ALONG THE BANKS OF THE RIVER.



The Chobe experience!

OUR LODGE IS YOUR GATEWAY TO THE CHOBE NATIONAL PARK. A VARIETY OF ACTIVITIES, INCLUDING GAME DRIVES, BOAT CRUISES, WALKING SAFARIS AND FISHING ARE AVAILABLE THROUGH OUR BOOKING OFFICE.



WE OFFER DAILY TRANSFERS TO THE VICTORIA FALLS IN ZAMBIA AND TO LOCAL AIRPORTS



The Lodge facilities



WE HAVE A SQUASH COURT, BEAUTY SALON, INTERNET CAFE, RIVER BAR, RESTAURANT AND CURIO SHOP THAT COMPLETE OUR HOST OF FACILITIES.



ON THE BANKS OF THE CHOBE RIVER



MOST PROLIFIC GAME VIEWING EXPERIENCES IN SOUTHERN AFRICA